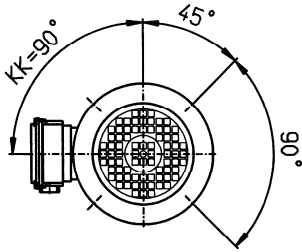
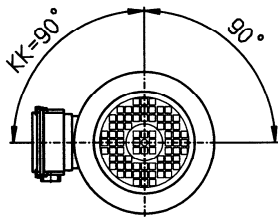


Fremdbelüfteraggregat FB
Schutzart IP 66

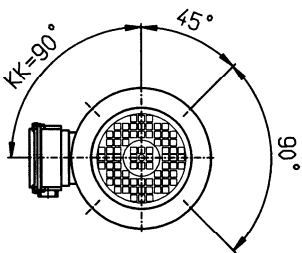
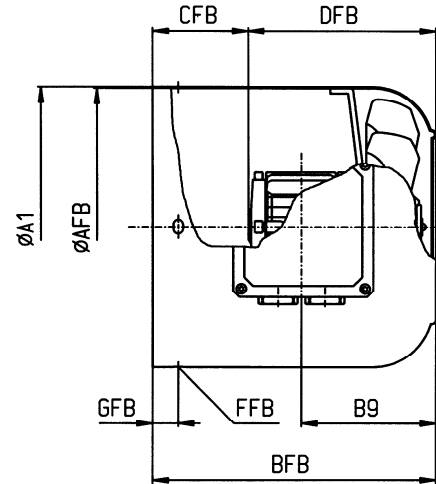
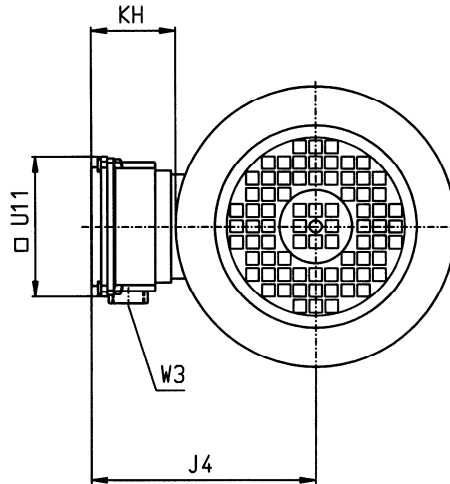
*Ventilation forcée FB
Protection IP 66*



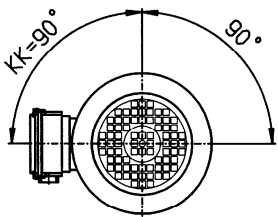
BG 56-132



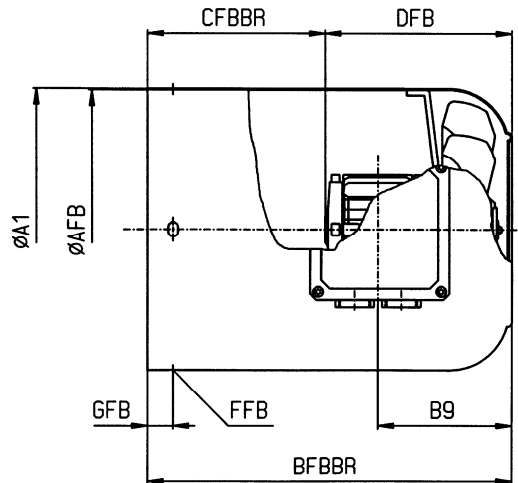
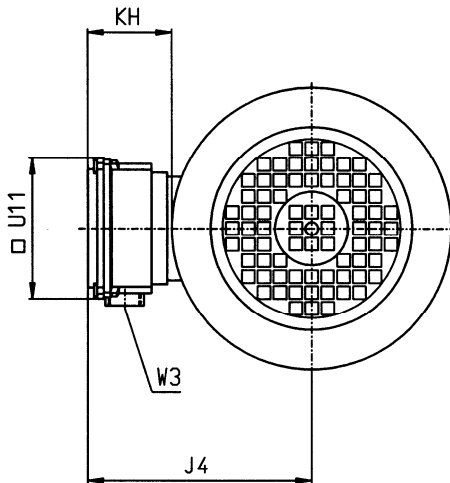
BG 160-355



BG 56-132



BG 160-355



Fremdbelüfteraggregat FB
Schutzart IP 66

Ventilation forcée FB
Protection IP 66

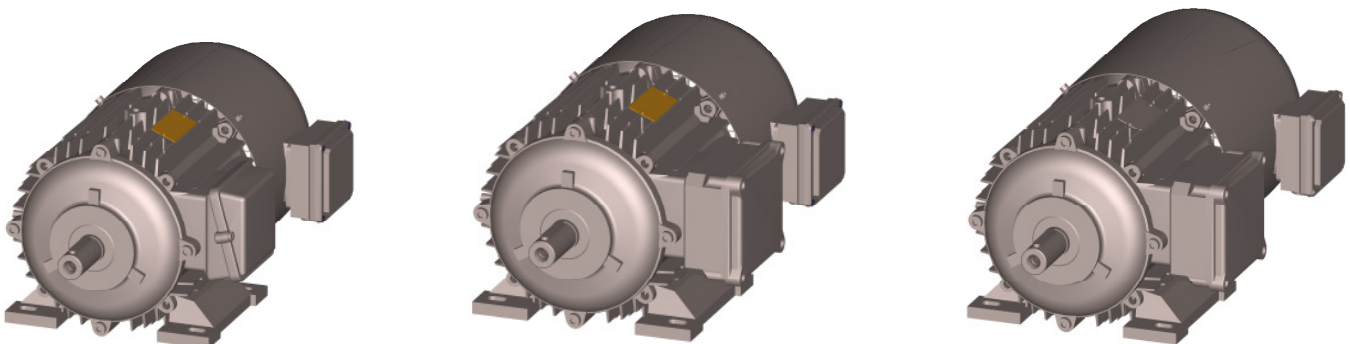
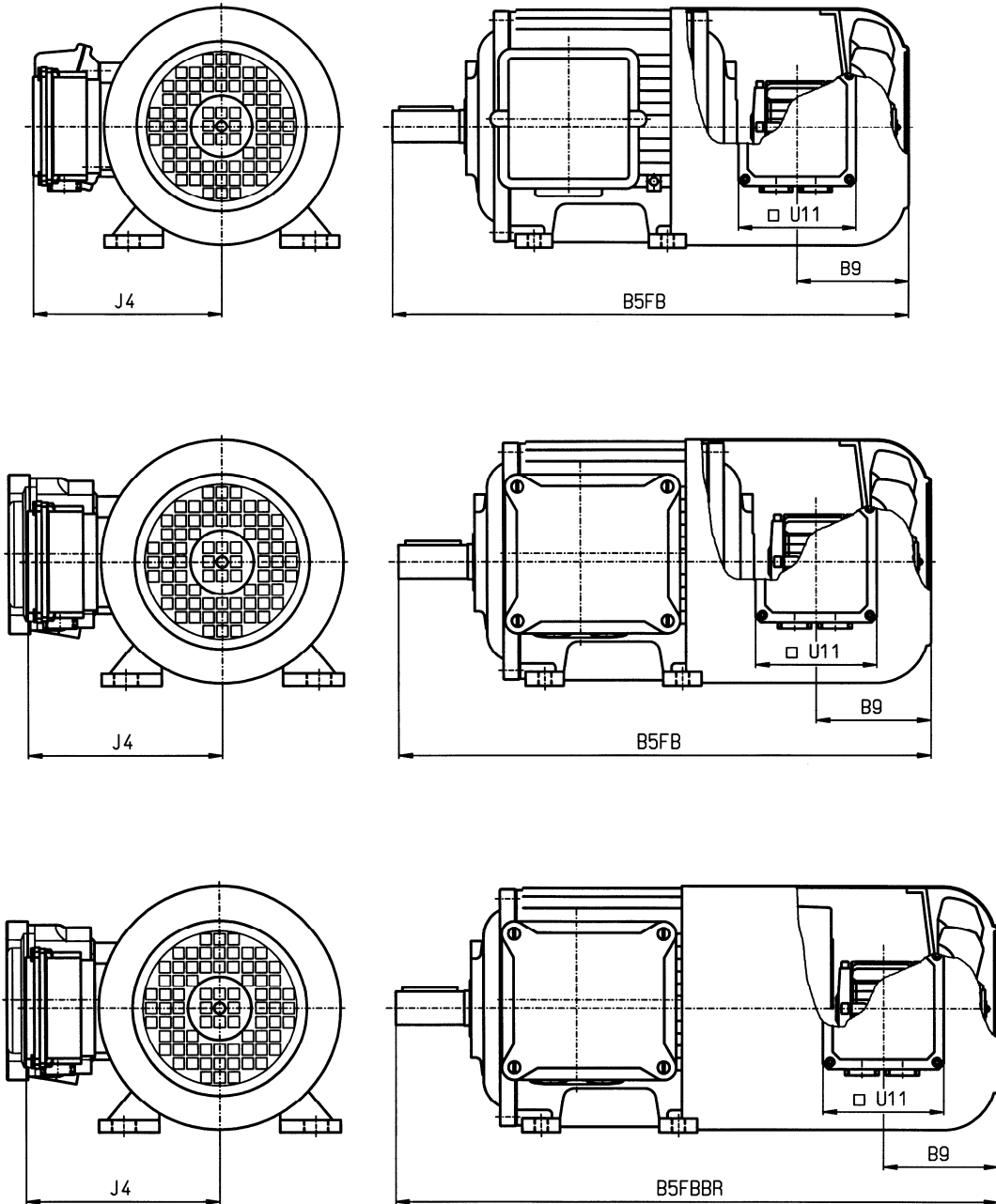
| | | Abmessung / Dimensions | | | | | | | | | | | | | |
|-----------|---------------|------------------------|-----|-----|-------|-------|-----|-------|-----|-------|-----|-------|----|-----|-----------|
| Typ Motor | Typ FB | A1 | AFB | BFB | BFBBR | B9 | CFB | CFBBR | DFB | FFB | GFB | J4 | KH | U11 | W3 |
| 56 | FBI 056 RiK | 110 | 108 | 138 | 170 | 49.0 | 48 | 80 | 90 | 4.8x6 | 10 | 107.5 | 53 | 88 | 2xM20x1.5 |
| 63 | FBI 063 RiK | 123 | 121 | 140 | 170 | 56.0 | 49 | 79 | 91 | 4.8x6 | 14 | 114.0 | 53 | 88 | 2xM20x1.5 |
| 71 | FBI 071 RBK | 138 | 136 | 165 | 200 | 68.0 | 50 | 90 | 115 | 6x9 | 10 | 122.0 | 53 | 88 | 2xM20x1.5 |
| 80 | FBI 080 RBK | 156 | 154 | 166 | 212 | 72.5 | 53 | 97 | 113 | 6x9 | 14 | 131.0 | 53 | 88 | 2xM20x1.5 |
| 90 | FBI 090 RBK | 176 | 174 | 178 | 230 | 83.5 | 60 | 112 | 118 | 6x9 | 16 | 141.0 | 53 | 88 | 2xM20x1.5 |
| 100 | FBI 100 RBK | 194 | 192 | 188 | 250 | 92.5 | 65 | 127 | 123 | 6x9 | 18 | 150.0 | 53 | 88 | 2xM20x1.5 |
| 112 | FBI 112 RBK | 218 | 216 | 199 | 260 | 96.5 | 70 | 131 | 129 | 6x9 | 16 | 162.0 | 53 | 88 | 2xM20x1.5 |
| 132 | FBI 132 RBK | 257 | 255 | 204 | 290 | 114.5 | 75 | 161 | 129 | 6x9 | 23 | 182.0 | 53 | 88 | 2xM20x1.5 |
| 160 | FBI 160-4 RBK | 310 | 307 | 380 | 430 | 75.0 | 136 | 186 | 244 | 6x9 | 25 | 210.0 | 55 | 88 | 2xM20x1.5 |
| 180 | FBI 180-4 RBK | 348 | 345 | 400 | 450 | 85.0 | 156 | 206 | 244 | 6x9 | 35 | 229.0 | 55 | 88 | 2xM20x1.5 |
| 200 | FBI 200-4 RBK | 385 | 382 | 425 | 470 | 105.0 | 181 | 226 | 244 | 6x9 | 38 | 247.5 | 55 | 88 | 2xM20x1.5 |
| 225 | FBI 225-4 RBK | 433 | 430 | 440 | - | 115.0 | 196 | - | 244 | 6x9 | 42 | 271.5 | 55 | 88 | 2xM20x1.5 |
| 250 | FBI 250-4 RBK | 480 | 477 | 515 | - | 140.0 | 220 | - | 295 | 8.8 | 46 | 295.0 | 55 | 88 | 2xM20x1.5 |
| 280 | FBI 280-4 RBK | 536 | 533 | 535 | - | 150.0 | 240 | - | 295 | 8.8 | 50 | 323.0 | 55 | 88 | 2xM20x1.5 |
| 315 | FBI 315-4 RBK | 600 | 597 | 595 | - | 170.0 | 300 | - | 295 | 8.8 | 50 | 355.0 | 55 | 88 | 2xM20x1.5 |
| 355 | FBI 355-4 RBK | 695 | 691 | 655 | - | 150.0 | 360 | - | 295 | 8.8 | 50 | 402.0 | 55 | 88 | 2xM20x1.5 |

| | | Technische Daten / Caractéristiques techniques | | | | | | | | | | | | | | |
|-----------|-------------|--|--------|---|-------|---------------------------------|---------|-------------------------------|------|-------|------|--------------------------------|-------|------------------|----|------|
| Typ Motor | Typ FB | Luftfördermenge Débit d'air | | Leistungsaufnahme Puissance absorbée | | Drehzahl Vitesse de rotation | | Stromaufnahme Consommation | | | | Geräuschpegel Niveau sonore | | Gewicht Poids | | |
| | | 1 x 230V Δ / 3 x 230 V Δ / 400V Y | | | | | | | | | | | | | | |
| | | 50 Hz | 60 Hz | 50 Hz | 60 Hz | 50 Hz | 60 Hz | 50 Hz | | 60 Hz | | 50 Hz | 60 Hz | | | |
| | | [m³/h] | [m³/h] | [W] | [W] | [min⁻¹] | [min⁻¹] | [A] | | [A] | | [dB] | [dB] | [kg] | | |
| 56 | FBI 056 RiK | 53 | 66 | 47 | 52 | 2800 | 3200 | 0.44 | 0.44 | 0.25 | 0.33 | 0.33 | 0.19 | 56 | 63 | 1.45 |
| 63 | FBI 063 RiK | 58 | 72 | 47 | 52 | 2800 | 3200 | 0.45 | 0.45 | 0.26 | 0.34 | 0.34 | 0.19 | 60 | 65 | 1.55 |
| 71 | FBI 071 RBK | 76 | 94 | 134 | 100 | 2960 | 3580 | 0.70 | 0.71 | 0.41 | 0.57 | 0.59 | 0.34 | 64 | 69 | 2.95 |
| 80 | FBI 080 RBK | 148 | 178 | 132 | 108 | 2940 | 3540 | 0.66 | 0.69 | 0.40 | 0.54 | 0.58 | 0.33 | 65 | 70 | 3.10 |
| 90 | FBI 090 RBK | 202 | 207 | 138 | 122 | 2895 | 3480 | 0.65 | 0.67 | 0.39 | 0.54 | 0.57 | 0.33 | 68 | 72 | 3.40 |
| 100 | FBI 100 RBK | 257 | 296 | 150 | 148 | 2840 | 3360 | 0.64 | 0.66 | 0.38 | 0.56 | 0.57 | 0.32 | 70 | 74 | 3.65 |
| 112 | FBI 112 RBK | 405 | 451 | 182 | 194 | 2760 | 3120 | 0.65 | 0.58 | 0.39 | 0.62 | 0.60 | 0.34 | 72 | 74 | 3.95 |
| 132 | FBI 132 RBK | 515 | 541 | 184 | 222 | 2630 | 2986 | 0.63 | 0.61 | 0.35 | 0.67 | 0.57 | 0.32 | 73 | 78 | 4.15 |

| | | Technische Daten / Caractéristiques techniques | | | | | | | | | | | | | |
|-----------|---------------|--|--------|---|-------|---------------------------------|---------|-------------------------------|-------|-------|-------|--------------------------------|-------|--|--|
| Typ Motor | Typ FB | Luftfördermenge Débit d'air | | Leistungsaufnahme Puissance Absorbée | | Drehzahl Vitesse de rotation | | Stromaufnahme Consommation | | | | Geräuschpegel Niveau sonore | | | |
| | | 3 x 230 - 290V Δ / 400 - 500V Y | | | | | | | | | | | | | |
| | | 50 Hz | 60 Hz | 50 Hz | 60 Hz | 50 Hz | 60 Hz | 50 Hz | | 60 Hz | | 50 Hz | 60 Hz | | |
| | | [m³/h] | [m³/h] | [W] | [W] | [min⁻¹] | [min⁻¹] | [A] | | [A] | | [dB] | [dB] | | |
| 160 | FBI 160-4 RBK | 642 | 767 | 120 | 158 | 1461 | 1737 | 0.95 | 0.55 | 0.85 | 0.49 | 69 | 72 | | |
| 180 | FBI 180-4 RBK | 865 | 1018 | 138 | 190 | 1445 | 1701 | 0.96 | 0.55 | 0.87 | 0.50 | 68 | 72 | | |
| 200 | FBI 200-4 RBK | 1125 | 1308 | 162 | 228 | 1431 | 1656 | 0.96 | 0.55 | 0.90 | 0.51 | 68 | 72 | | |
| 225 | FBI 225-4 RBK | 1230 | 1439 | 172 | 242 | 1420 | 1657 | 0.96 | 0.55 | 0.91 | 0.52 | 68 | 72 | | |
| 250 | FBI 250-4 RBK | ~1400 | ~1800 | - | - | ~1400 | ~1600 | ~3.10 | ~1.80 | ~3.03 | ~1.75 | ~72 | ~78 | | |
| 280 | FBI 280-4 RBK | ~1400 | ~1800 | - | - | ~1400 | ~1600 | ~3.10 | ~1.80 | ~3.03 | ~1.75 | ~72 | ~78 | | |
| 315 | FBI 315-4 RBK | ~1400 | ~1800 | - | - | ~1400 | ~1600 | ~3.10 | ~1.80 | ~3.03 | ~1.75 | ~72 | ~78 | | |
| 355 | FBI 355-4 RBK | ~1400 | ~1800 | - | - | ~1400 | ~1600 | ~3.10 | ~1.80 | ~3.03 | ~1.75 | ~72 | ~78 | | |

Fussmotor mit aufgebauter Fremdbelüftung
Fussmotor mit aufgebauter Bremse und Fremdbelüftung
Schutzart IP 55

*Moteur à pieds avec ventilation forcée
Moteur à pieds avec frein et ventilation forcée
Protection IP 55*



Fussmotor mit aufgebauter Fremdbelüftung
 Fussmotor mit aufgebauter Bremse und Fremdbelüftung
 Schutzart IP 55

*Moteur à pieds avec ventilation forcée
 Moteur à pieds avec frein et ventilation forcée
 Protection IP 55*

| BG | Motorabmessungen / Croquis d'encombrement | | | | |
|--------------------|--|--------|-------|-------|-------|
| | B5FB | B5FBBR | J4 | □ U11 | B9 |
| 56M | 271.0 | 303.0 | 107.5 | 88 | 49.0 |
| 63M | 289.0 | 319.0 | 114.0 | 88 | 56.0 |
| 71M | 331.0 | 371.0 | 122.0 | 88 | 68.0 |
| 80M | 364.5 | 408.5 | 131.0 | 88 | 72.5 |
| 90S | 392.5 | 444.5 | 141.0 | 88 | 83.5 |
| 90L | 417.5 | 469.5 | | | |
| 100L | 458.5 | 520.5 | 150.0 | 88 | 92.5 |
| 112M ¹⁾ | 483.0 | 544.0 | 162.0 | 88 | 96.5 |
| 132S | 534.0 | 620.0 | 182.0 | 88 | 114.5 |
| 132M | 572.0 | 658.0 | | | |
| 160M | 832.0 | 882.0 | 210.0 | 88 | 75.0 |
| 160L | 876.0 | 926.0 | | | |
| 180M | 898.0 | 948.0 | 229.0 | 88 | 85.0 |
| 180L | 936.0 | 986.0 | | | |
| 200L | 992.0 | 1037.0 | 247.5 | 88 | 105.0 |
| 225S | 1000.0 | - | 271.5 | 88 | 115.0 |
| 225S | 1030.0 | - | | | |
| 225M | 1025.0 | - | | | |
| 225M | 1055.0 | - | | | |
| 250M | 1183.5 | - | 295.0 | 88 | 140.0 |
| 250M | 1183.5 | - | | | |
| 280S | 1266.0 | - | 323.0 | 88 | 150.0 |
| 280M | 1317.0 | - | | | |
| 315S | 1400.5 | - | 355.0 | 88 | 170.0 |
| 315S | 1430.5 | - | | | |
| 315M | 1451.5 | - | | | |
| 315M | 1481.5 | - | | | |
| 355M | 1776.0 | - | 402.0 | 88 | 150.0 |
| 355M | 1806.0 | - | | | |
| 355L | 1776.0 | - | | | |
| 355L | 1806.0 | - | | | |

¹⁾ = in Graugussausführung werden die Masse B5FB und B5FBBR um 20 mm verlängert
les dimensions B5FB et B5FBBR sont augmentées de 20 mm pour l'exécution en fonte d'acier