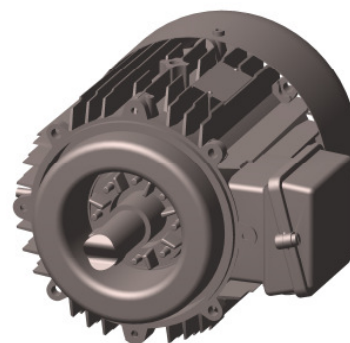
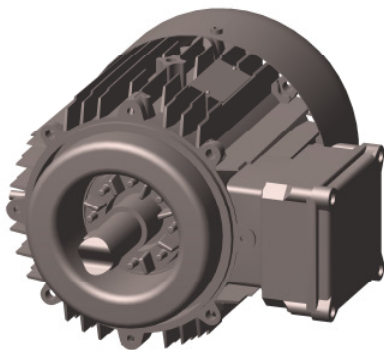
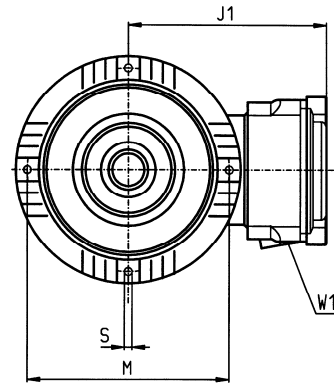
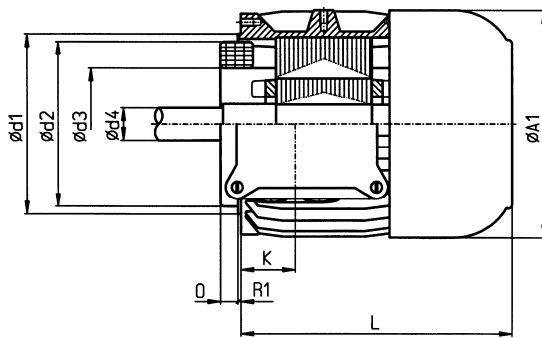
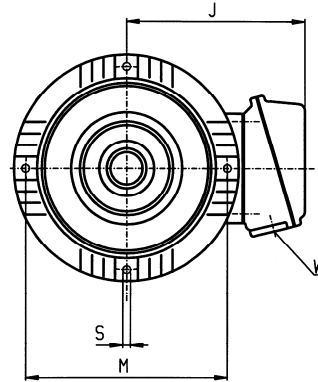
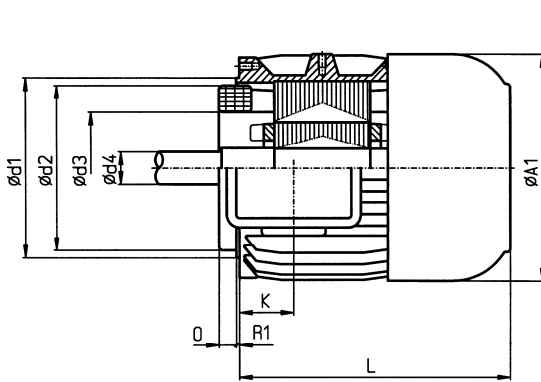


Bauform B9
Schutzart IP 55

*Forme B9
Protection IP 55*



Bauform B9
 Schutzart IP 55

 Forme B9
 Protection IP 55

Motorabmessung / Croquis d'encombrement															
BG	A1	d1	d2	d3	d4	J	J1	K	L	M	O	R1	S	W	W1
56M	111	83	73	45	12	100	117	44.5	142.5	96	7	3	M5	2xM16	2xM20
63M	123	93	83	50	15	105	122	50.5	163.0	108	7	3	M5	2xM16	2xM20
71M	138	111	100	60	15	114	131	48.0	177.5	124	7	3	M5	2xM16	2xM20
80M	156	125	113	67	20	130	145	44.5	199.5	140	12	3	M5	1xM25	1xM25
90S	176	140	128	75	25	140	155	44.5	212.5	158	13	4	M6	1xM25	1xM25
90L									237.5						
100L	194	156	153	85	30	149	164	44.5	261.5	176	16	4	M6	1xM25	1xM25
112M ¹⁾	218	177	163	95	30	161	176	44.5	277.0	195	16	4	M8	1xM25	1xM25
132S	258	208	190	118	40	198	198	52.0	314.0	230	18	4	M8	2xM25	2xM25
132M									352.0						
160M	310	250	226	145	45	235	227	96.0	411.0	275	29	4	M10	2xM32	2xM32
160L								118.0	455.0						
180M	348	284	256	160	50	252	252	172.0	474.0	310	28	5	M10	2xM40	2xM40
180L								191.0	512.0						
200L	385	315	280	180	65	302	302	200.0	550.0	345	32	5	M12	2xM50	2xM50
225S	433	355	320	200	70	322	322	189.0	539.0	382	36	6	M12	2xM50	2xM50
225M								201.5	564.0						
250M	480	390	355	225	75	350	350	219.0	625	430	50	6	M16	2xM50	2xM50
280S	536	440	400	255	85	385	385	254.5	710	480	68	6	M20	2xM63	2xM63
280M								280.0	761						
315S	612	505	480	310	90	435	435	287.5	772	550	50	7	M20	2xM63	2xM63
315M								313.0	823						
355M	695	585*	560	345	110	513	513	440.0	1090	610	37	7*		2xM80	2xM80
355L															

* = Innenzentrierung / Centrage en retrait

 1) = Bei BG 112M in Graugussausführung ändern diverse Längenmasse
 Quelques cotes de la grandeur 112M en exécution en fonte grise sont différentes